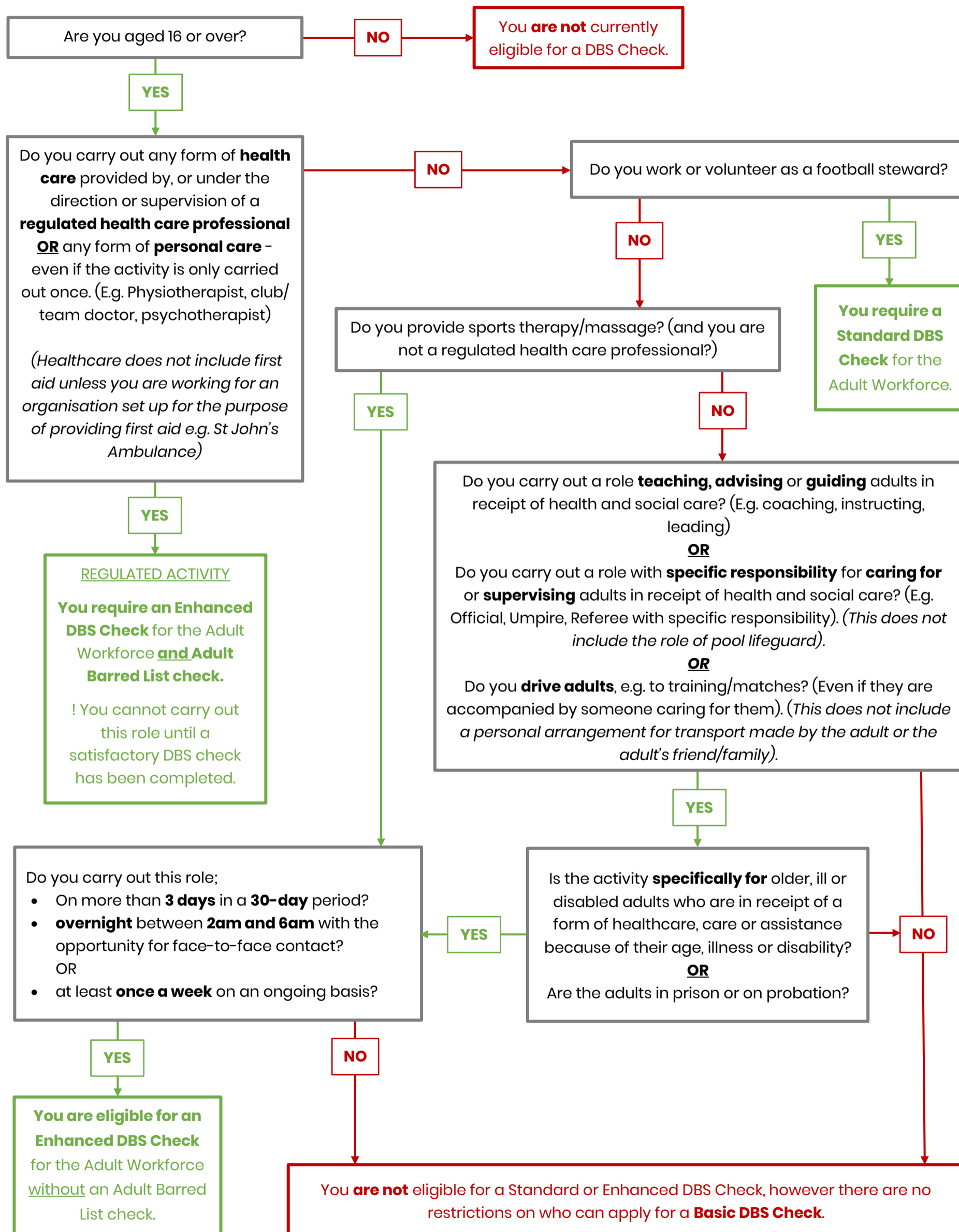


Guidance for DBS Checks in Sport- Working with Adults (England and Wales)

This flowchart is for guidance only and does not include every role which may be eligible for a DBS check working with adults. It is important to always check with DBS or a legal advisor if you are unsure. Further guidance and an online eligibility tool can be found on the gov.uk website [here](#). (This guidance would apply whether the individuals are paid or unpaid.)



ATTENTION: MANAGERS/ SUPERVISORS

If you are a direct, day-to-day manager or supervisor of someone who is eligible for a DBS Check, then you are also eligible for the same level of DBS Check as the individual you manage/ supervise.